

# FUTURE OF SEA-LEVEL RISE

1995-2014 TO 2100



## PRESENT DAY

Sea level in 1995-2014

## SCENARIO 1

Sea level in 2100 if the global temperature is 2°C higher than 1900

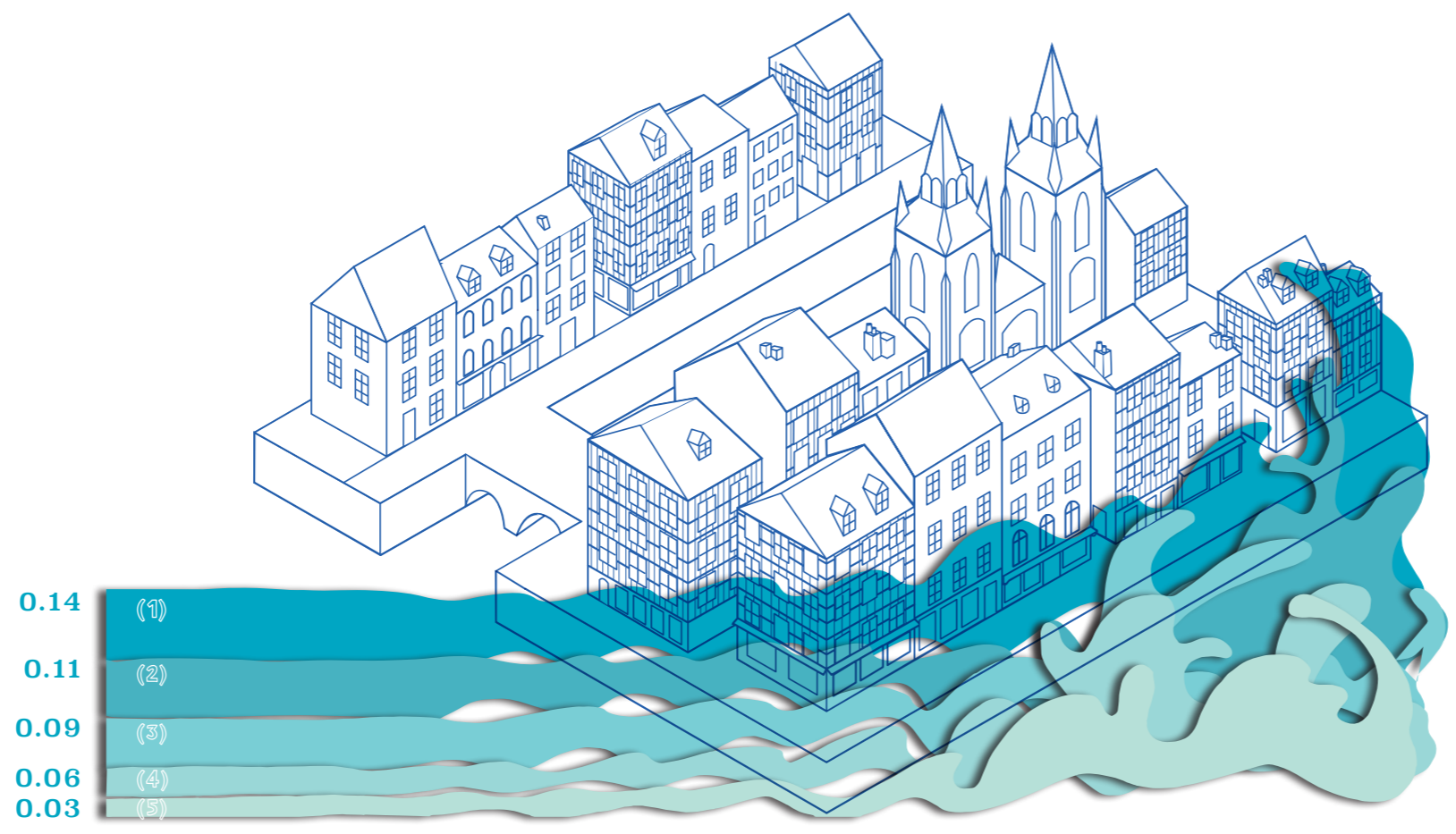
## SCENARIO 2

Sea level in 2100 if the global temperature is 4,8°C higher than 1900 with instability of the ice sheets

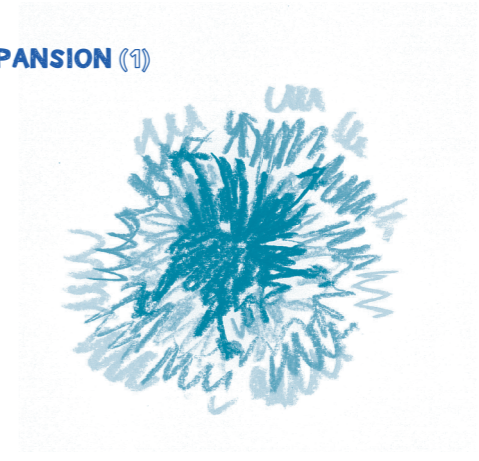
Données provenant du sixième rapport d'évaluation du GIEC (2021)  
This project has received funding from the European Union's Horizon 2020 research and innovation programme under grant agreement No 8689304.  
This material reflects only the author's view and the European Commission is not responsible for any use that may be made of the information it contains.  
Graphic design : Lisa LANDONI and Pauline ONGARO  
DNMA De graphisme, Lyöce Argouges, 28 mars 2023

# SCENARIO 1

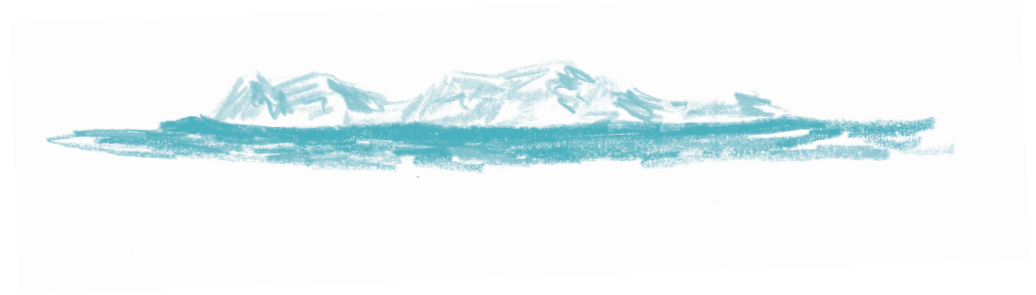
Sea level in 2100 if the global temperature is 2°C higher than 1900



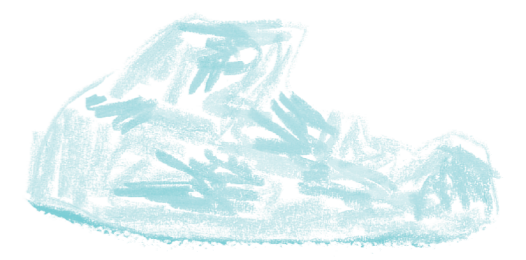
THERMAL EXPANSION (1)



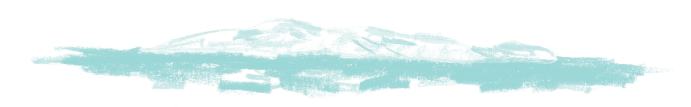
ANTARCTIC ICE SHEET (2)



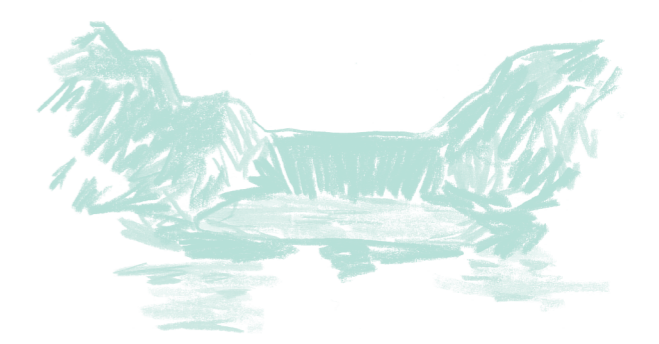
GLACIERS (3)



GREENLAND ICE SHEET (4)



WATER STORAGE ON LAND (5)



# SCENARIO 2

Sea level in 2100 if the global temperature is 4.8°C higher than 1900 with instability of the ice sheets

